

METABIOMED PRODUCT

Catalog

Contents

ENDODONTICS

Root Canal Filling

- 03 Gutta Percha Points
- 05 Absorbent Paper Points

Root Canal Medicaments

- 07 Metapex Plus
- 09 Metapaste Plus

Root Canal Sealer

- 11 ADSEAL Plus
- 13 CeraSeal

EDTA

- 16 MD-ChelCream
- 17 MD-Cleanser

Core Build up

- 19 NexCore

DENTAL EQUIPMENT

Endodontic File

- 23 Aurum Blue
- 27 Aurum G
- 28 Aurum Pro

Apex Locator

- 29 EQ-Pex
- 31 i-ROOT
- 33 ROOTOR

Endo Motor

- 35 EQ-M
- 37 ES-100

Irrigation Device

- 39 EQ-S

Obturation Device

- 41 EQ-V

Plugger

- 43 EQ Condenser

Curing light

- 45 Glare

RESTORATIVE

Bonding / Etchant

- 49 Meta P&Bond
- 50 Meta Etchant

Liner

- 51 Biner LC

Hybrid Composite

- 53 Nexcomp
- 55 EZFil
- 57 Nexcomp Flow

Temporary Cavity Filling

- 59 MD-Temp Plus

Temporary Cement

- 61 NETC

Permanent Cement

- 63 Metacem

Impression Material

- 65 Imflex
- 67 Imflex Bite

BONE GRAFT

Synthetic Bone

- 69 BoneMedik-DM Bone
- 71 Sorbone





ENDODONTICS

Root Canal Filling

- 04 Gutta Percha Points
- 06 Absorbent Paper Points

Root Canal Medicaments

- 08 Metapex Plus
- 10 Metapaste Plus

Root Canal Sealer

- 12 ADSEAL Plus
- 14 CeraSeal

EDTA

- 17 MD-ChelCream
- 18 MD-Cleanser

Core Build up

- 20 NexCore

*Saving
the Natural
Tooth*



Gutta Percha Points



SHELF LIFE

4years

FEATURE & BENEFIT

- **Various tapers & sizes**
It is applicable to various shapes of root canals
- **Length marked**
Checking working length is available as a supportive option
- **Excellent radiopacity**
- **Suitable with various**
CWC,Lateral, One cone working length is available as a supportive option

SIZE & SPECIFICATION

- **02 Taper**
10~140
- **04,06 Taper**
15~80
- **08 Taper**
15~40
- **Non Standard**
 - Non-Standard : XF, FF, MF, F, FM, M, ML, L, XL
 - Japanese Type : JF-S, JF-M, JF-L, JS, JM, JL, JL-M, JX-L
 - DE Trey Type : XX-F, X-F, Fine, Medium
 - Protaper Size (F1 ~ F5)

ORDER INFORMATION

Taper \ Size	10	15	20	25	30	35	40	45	50	55	60	70	80	90	100	110	120	130	140
02(120)	○	○	○	○	○	○	○	○	○	○	○								
04(60)		○	○	○	○	○	○	○	○	○	○	○	○						
06(60)		○	○	○	○	○	○	○	○	○	○	○	○						
08(60)		○	○	○	○	○	○												

LENGTH MARKED



APPLICATION

- Permanent root canal filling

PACKAGING

6 VIAL PACKING SQUARE



- Code
P.31
- Regular Packing Points
GP 60/120 Points
- Dimension
84 × 51 × 16mm

6 VIAL PACKING ROUND



- Code
P.31
- Regular Packing Points
GP 60/120 Points
- Dimension
84 × 51 × 16mm

SLIDING TYPE DISPENSER



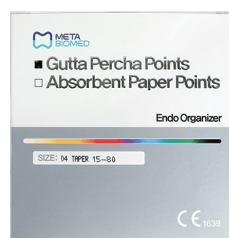
- Code
P.71
- Regular Packing Points
GP 60/120 Points
- Dimension
70 × 45 × 12mm

4 COMPARTMENT DISPENSER



- Code
P.51
- Regular Packing Points
GP 60/100 Points
- Dimension
77 × 45 × 13mm

ENDO ORGANIZER



- Code
P.11 * Spill Proof 12 Compartments
- Regular Packing Points
GP 240 Points
- Size
ISO 15 ~ 80 * Color Coded Available

Absorbent Paper Points

Sterilized Absorbent Paper Points



SHELF LIFE

5years

FEATURE & BENEFIT

- **Highly absorbent**
Less consumption amount
- **Length marked**
Checking working length is available as a supportive option
- **Various sizes & Packages**
- **Color coded**

SIZE & SPECIFICATION

- **02 Taper** - **04,06 Taper** - **08 Taper**
10~140 15~80 15~40
- **Non Standard**
- Non-Standard : XX-Fine, X-Fine, Fine, Medium, Coarse, X-Coarse
- Protaper Size : F1~F5

ORDER INFORMATION

Taper \ Size	10	15	20	25	30	35	40	45	50	55	60	70	80	90	100	110	120	130	140
02(120)	○	○	○	○	○	○	○	○	○	○	○	○	○	○	○	○	○	○	○
04(60)		○	○	○	○	○	○	○	○	○	○	○							
06(60)		○	○	○	○	○	○	○	○	○	○	○							
08(60)		○	○	○	○	○	○												

LENGTH MARKED



APPLICATION

- Drying root canals before obturation
- Cleaning root canals

PACKAGING

6 VIAL PACKING SQUARE



- Code
P.31
- Regular Packing Points
PP 60/200 Points
- Dimension
84 x 51 x 16mm

6 VIAL PACKING ROUND



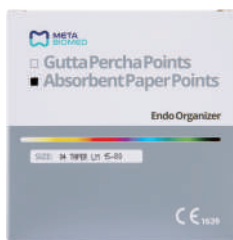
- Code
P.31
- Regular Packing Points
PP 60/200 Points
- Dimension
84 x 51 x 16mm

SLIDING TYPE DISPENSER



- Code
P.71
- Regular Packing Points
PP 60/200 Points
- Dimension
70 x 45 x 12mm

ENDO ORGANIZER



- Code
P.11 * Spill Proof 12 Compartments
- Regular Packing Points
PP 400 Points
- Size
ISO 15 ~ 80 * Color Coded Available

SLIDING TYPE DISPENSER



- Code
P.61
- Regular Packing Points
180 / 200 Points
- Dimension
163 x 54 x 11mm * Available for PP only

Metapex Plus

Calcium Hydroxide Temporary Filling Material



SHELF LIFE

2years

FEATURE & BENEFIT

- **Antibacterial effect**
acts as intracanal medicament
- **Premixed type**
Quick and easy treatment with minimal waste & clean up
- **Excellent Radiopacity (Iodoform)**
Easy to check the presence of residue
- **Disposable tips**
prevents cross-contamination

APPLICATION

- Root Canal Cleaning and Shaping
- Weeping Canal
- Root Canal Filling for deciduous teeth
- Temporary Root canal filling
- Formation of a hard tissue barrier (Apexification)

ORDER INFORMATION

- Metapex plus × 1 Syringe with 20 tips
- Metapex plus × 2 Syringes with 20 tips

COMPONENTS

- 2.2g paste in syringes
2 syringe packing available



- Disposable Tips (20tips)
- One ring rotator for direction control of the tip

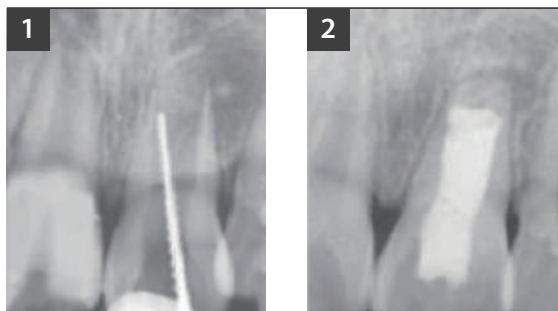


DIMENSION / WEIGHT

- 228 × 61 × 22mm / 46g

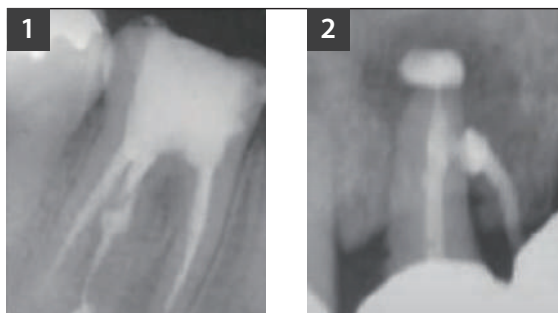
CLINICAL CASE

Apexification



1. Pulp necrosis on #21 of 8year-old boy took place by trauma.
2. About 1 year after Metapex treatment

Root Resorption



1. Internal resorption on disto-lingual root
2. Root Perforation by inflammatory resorption

Metapaste Plus

Water-based Calcium Hydroxide Temporary Filling Material



SHELF LIFE

2years

FEATURE & BENEFIT

- **Antibacterial effect**
acts as intracanal medicament
- **Water Soluble**
Easy to clean and remove
- **Excellent Radiopacity (Barium Sulfate)**
Easy to check the presence of residue
- **Premixed type**
Quick and easy treatment with minimal waste & clean up
- **Disposable tips**
prevents cross-contamination

APPLICATION

- **Root Canal Cleaning and Shaping**
- **Weeping Canal**
- **Root Canal Filling for deciduous teeth**
- **Temporary Root canal filling**
- **Formation of a hard tissue barrier (Apexification)**

ORDER INFORMATION

- Meta paste Plus × 1 Syringe with 20 tips
- Meta paste Plus × 2 Syringes with 20 tips

COMPONENTS

- 2.2g paste in syringes
- 2 syringe packing available



- Disposable Tips (20tips)
- One ring rotator for direction control of the tip

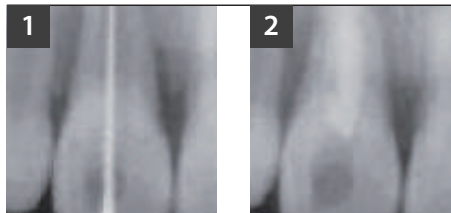


DIMENSION / WEIGHT

- 228 × 61 × 22mm / 46g

CLINICAL CASE

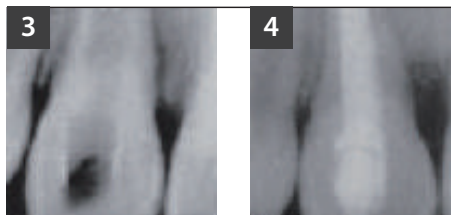
Apexification



1. BEFORE TREATMENT

Large apical foramen with an incomplete apex Note the root. resorption on the lateral surface

2. METAPASTE FILLING



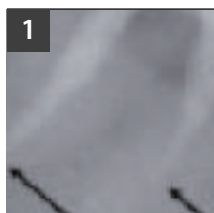
3. THREE MONTHS LATER

after removal of the paste. it shows a formation of the apical barrier

4. SIX MONTHS LATER

Excellent healing without further root resorption

To locate real apical foramen



1. About 1-2 months after, X-ray shows exactly where the real apical foramen is.

ADSEAL Plus

Resin based Root canal sealer



SHELF LIFE

2years

FEATURE & BENEFIT

- Paste - Paste type
Easy to use (Dispense tip, auto-mix tip)
- Hermetic sealing ability
increasing success probability of root canal treatment
- Nonstaining to teeth(Bismuth free)
- Not dissolve in tissue fluids
- Excellent biocompatibility
- Good radiopacity

APPLICATION

- Permanent root canal sealing

DIMENSION / WEIGHT

- 55 × 180 × 40mm / 98g

COMPONENTS

- 13.5g dual syringe
 - Base 9g *Epoxy resin, Calcium phosphate*
 - Catalyst 4.5g *Amines, Bismuth subcarbonate*



- Spatula
- Mixing Pad
- Dispense Tip

ORDER INFORMATION

- ADSEAL Plus 13.5g
- Mixing pad
- Spatula, Dispense Tip & Cap
- ADSEAL Plus IFU

CeraSeal

Calcium Silicate-based Bioceramic Root Canal Sealer



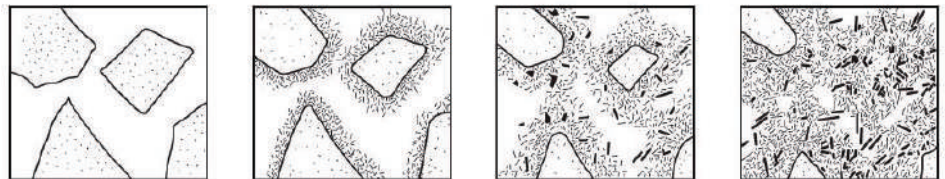
SHELF LIFE

2years

FEATURE & BENEFIT

- It's Calcium Silicate!

Calcium silicate produces CAH(Calcium Aluminate Hydrate) gel and CSH(Calsium Silicate Hydrate) gel by absorbing the moisture from surrounding tissues in the root canal and some crystallization of Calcium Hydroxide ($\text{Ca}(\text{OH})_2$)



- Antimicrobial effect

suppress the bacteria in the root canal

- Non toxic (High cell viability)

Healing effect, harmless to human

- High volumetric stability (no shrinkage, expansion)

Hydraulic condensation (One cone technique) is possible thanks to hermetic sealing

- High flowability

All aspects of canal anatomy can be reached, which wasn't possible with CWC

- Appropriate setting time (3.5h)

prevents washout phenomenon

- Premixed Syringe Type

SPECIFICATION

- Setting time 3.5 hour - pH >12 - Radiopacity >8mmAl - Flowability >23mm

COMPONENTS

- 2g Pre-mixed syringe × 1EA



- Intra canal tips × 10EA



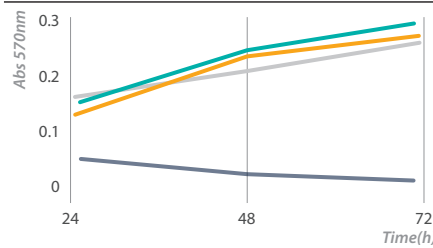
- Drying root canals before obturation
 - Cleaning root canals

APPLICATION

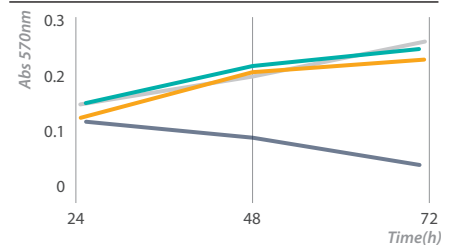
- Permanent root canal sealing
- Permanent root canal filling after pulp gangrene and temporary filling treatment

TEST RESULT

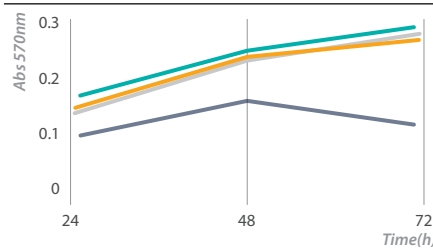
Non diluted



Diluted 1:2



Diluted 1:4



— CeraSeal — Control
— Company B — Company M

This test result shows that even if CeraSeal has high pH(12.73), it has the excellent biocompatibility. So it's harmless to human body, also it has excellent biocompatibility understandably.

ORDER INFORMATION

- 2g × Syringe 1ea, Disposable Tip 10ea

MD-Chelcream

EDTA Cream



SHELF LIFE

2years

FEATURE & BENEFIT

- Removal of inorganic substances with chelation (EDTA-CA 2⁺ 19%)
- Acts as lubricant
- Smear layer removal

APPLICATION

- Root canal preparation with files and reamers
- Removal of calcification in the root canal
- For narrow canals in posterior teeth
- Smear layer removal

COMPONENTS

- MD-ChelCream 7g(5.4ml) × 2
- Disposable tips × 10ea



DIMENSION / WEIGHT

186 × 45 × 30mm / 59g

ORDER INFORMATION

- 7g x 2 syringes, Disposable Tip 10ea



MD-Cleanser

EDTA solution



SHELF LIFE

2years

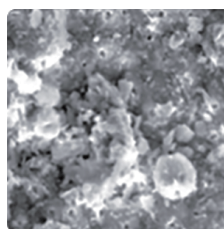
FEATURE & BENEFIT

- Removal of inorganic substances with chelation (EDTA-CA 2⁺ 19%)
- Acts as lubricant
- Smear layer removal

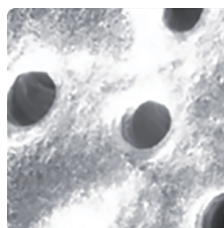
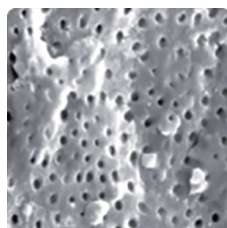
APPLICATION

- Removal of calcification in the root canal
- For narrow canals in posterior teeth
- Smear layer removal

CLINICAL CASE



- Application Method
- After root canal preparation



- After MD-Cleanser application(x1000)
- After MD-Cleanser application(x7000)

COMPONENTS

- MD-Cleanser: 100ml



- 1cc syringe



- Disposable tips x 3ea



ORDER INFORMATION

- 100ml, 1 Syringe, Disposable Tip 3ea

DIMENSION / WEIGHT

106 x 50 x 53mm / 138g

 **Get better result with EQ-S** New
Go to page 39



Nexcore

Dual-cured core build-up composite



SHELF LIFE

2years

FEATURE & BENEFIT

- **Similar elasticity to Dentin**
Endure controlled substance removal a precise preparation margin
- **High Strength**
- **Various Shade**
Compatible with ceramic, fiber and metal
- **Auto-mix delivery system**
Quick and easy treatment available with minimal waste & clean up
- **Dual curing system**
Reducing polymerization failure of composite with reliable setting

APPLICATION

- **Post adhesions and core build-up in restoration**

PHYSICAL PROPERTIES

- **Working time**
1:50 ~ 2:20 min
- **Setting time**
4:00 ~ 5:00 min (Self-cure)
20 ~ 40 sec (Light-cure)
- **Flexural strength (light curing)**
115.52 Mpa

COMPONENTS

NexCore Dual Syringe



- NexCore Dual Syringe 9g x 2ea
 Shade: Tooth, White, Blue



- Automix-tip 20ea

- Intraoral-tip 10ea



- Endo-tip 10ea

NexCore Dual Syringe Refill

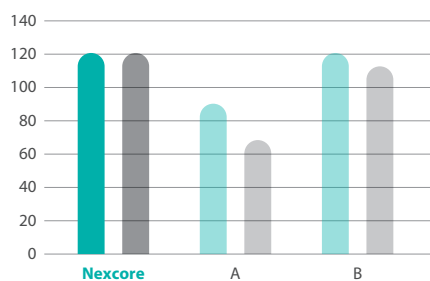


- NexCore Dual Syringe 9g x 1ea
 Shade : Tooth, White, Blue

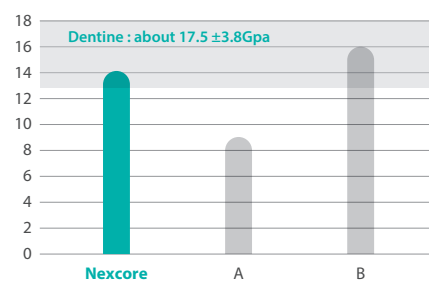
- Automix-tip 3ea

PHYSICAL PROPERTIES

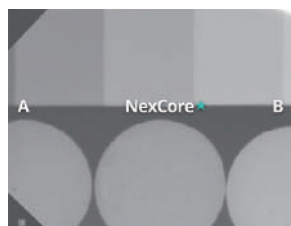
Flexural strength (Mpa)



Flexural modulus (Gpa)



Radio-Opacity







DENTAL EQUIPMENT

Endodontic File

- 24 Aurum Blue
- 28 Aurum G
- 29 Aurum Pro

Apex Locator

- 30 EQ-PEX
- 32 i-ROOT
- 34 ROOTOR

Endo Motor

- 36 EQ-M
- 38 ES-100

Irrigation Device

- 40 EQ-S

Obturation Device

- 42 EQ-V

Pluggers

- 44 EQ Condenser

Curing light

- 46 Glare

*Saving
the Natural
Tooth*



Aurum Blue

Controlled Memory File



FEATURE & BENEFIT

- Martensitic Alloy

Aurum Blue stays as Martensitic form at room temperature due to special heat-treatment. It gives super flexibility, by which Aurum Blue has strong resistance for cyclic fatigue.

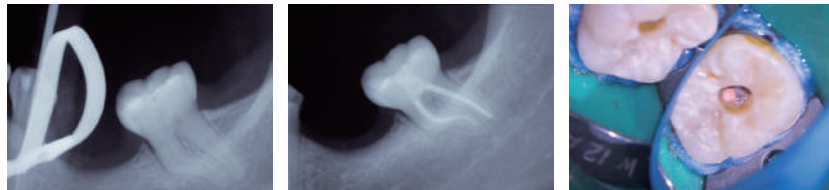
- Electro-polished

Roughness of surface can cause micro cracks ending up fractures. Electro-Polishing removes roughness and reduces possibilities of fracture caused by micro cracks

APPLICATION

- Root Canal Cleaning and Shaping

CLINICAL CASE



Aurum Blue files allow me to work efficiently and safely at the same time. Their cross-sectional design combined with the NiTi controlled memory alloy is the perfect combination for providing cutting efficiency, great flexibility and outstanding fatigue resistance.

- Dental Tribune Article

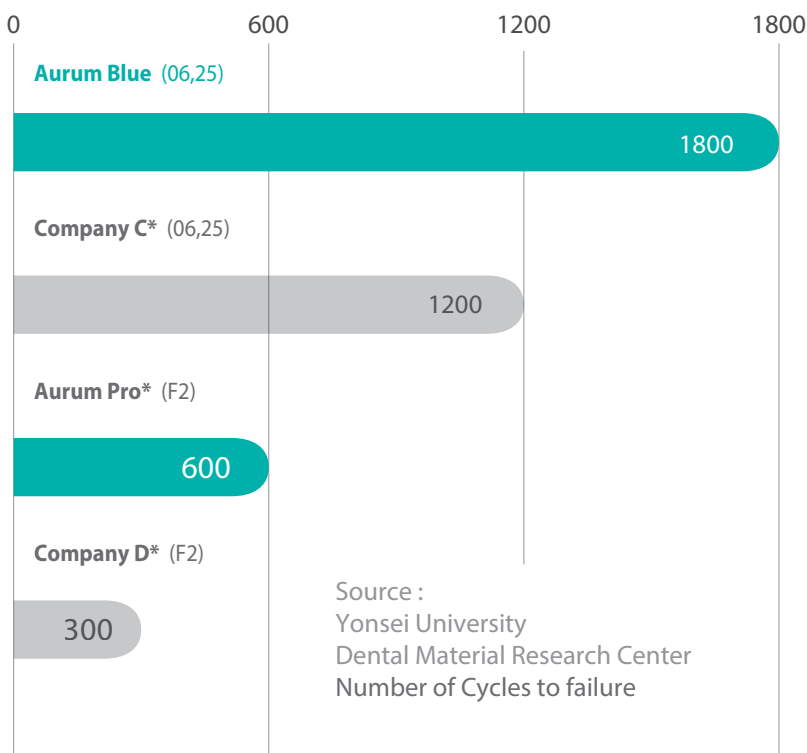
ORDER INFORMATION

Aurum Blue, 4pcs/pack

Contents	ID	Size	Length			
			17mm	21mm	25mm	31mm
Sequence Pack (20/.10, 20/.04, 25/.06, 35/.04)				○	○	○
CF (20/.10)		20	○			
T1 (20/.04)	●	20		○	○	○
T1.5 (25/.04)	●	25		○	○	○
T2 (25/.06)	●	25		○	○	○
T2.5 (30/.04)	●	30		○	○	○
T3 (35/.04)	●	35		○	○	○
T4 (40/.04)	●	40		○	○	○
T4.5 (45/.04)	○	45		○	○	○

COMPARISON

Extremely resistant to fracture



Cross-section, Efficient and Safe



Convex Triangular Shape

- Size above 25/.06
- Resistant Torsional Stress while maintaining Flexibility



Square Shape

- Size below 25/.04
- Excellent Centering, Resistant to fracture

Sem(Aurum Blue)



Clean surface of Aurum Blue



Non-cutting tip





Aurum G

Glide Path File



FEATURE & BENEFIT

- Increased flexibility

Advanced heat treatment technology gives it enhanced flexibility and it offers you many advantages over manual stainless steel files

- Surface Treatment

It results in significantly reduced fractures caused by micro cracks

APPLICATION

- Root Canal Cleaning and Shaping

- Establishing a glide path

ORDER INFORMATION

Aurum G, 6pcs/pack

Contents	Length		
	21mm	25mm	31mm
Sequence Pack (G13 3pcs, G17 3pcs)	○	○	○
G13 (13/.025)	○	○	○
G17 (17/.025)	○	○	○

Aurum Pro

Endodontic File



FEATURE & BENEFIT

- **Conservative System**
Its less taper (5%) leads to accomplish conservative cutting. Dentin structure can be saved more.
- **The system you trust**
the most commonly used rotary file system
- **Incredible strength**
It has improved resistance to cyclic fatigue of the file.

APPLICATION

- **Root Canal Cleaning and Shaping**

ORDER INFORMATION

Aurum Pro, 6pcs/pack

Contents	Length			
	19mm	21mm	25mm	31mm
Sequence Pack (SX, S1, S2, F1, F2, F3)		○	○	○
SX(19)	○			
S1(18.5)		○	○	○
S2(20)		○	○	○
F1(20)		○	○	○
F2(25)		○	○	○
F3(30)		○	○	○

EQ-PEX

Electronic Apex Locator



ADVANTAGES

- Best accuracy in any condition in the root canal (Dry, bleeding, wet, saline, EDTA, NaOCl or Chlorhexidine Etc.,)
- Simultaneous measurement of visual and sound
- “Light Guide” on file holder B & main button on EQ-M when connecting
- Simple and easy to use
- Auto power-off for saving battery life
- Stable and reliable measurement result

COMPONENTS

- EQ-Pex main unit 1EA
- Lip hook 5EA
- File holder A
- AC/DC Adapter
- Probe cord
- File holder gender
- File holder B
- Power cord

SPECIFICATION

Item		Description
Motor handpiece	Rated Input	3.6V / 1,900mAh (Lithium-ion-battery)
	Dimensions	90 X 75.4 X 73.6mm
	Weight	184g
	Operation Mode	Continuous operation
AC/DC Adapter	Input voltage	100 – 240V, 50 – 60Hz
	Output voltage	
	Output current	



i-ROOT

Electronic Apex Locator



FEATURE & BENEFIT

- **Best accuracy in any root canal condition**
(Dry, bleeding, wet, saline, EDTA, NaOCl, Chlorhexidine etc...)
- **Simultaneous visual and sound measurement**

APPLICATION

- **Measuring the working length of the tooth during the endodontic treatment**

SPECIFICATION

- **Battery**
Lithium-Ion, DC8.2V 2200mAh
- **AC-Adapter**
AC100~240V (50~60Hz)
- **Continuous use**
60hours
- **Weight**
390g

COMPONENTS

- i-ROOT main unit × 1EA
- Probe cord × 1EA
- File holder A × 1EA
- File holder B × 2EA
- Lip Clips × 5EA



ROOTOR

Electronic Apex Locator



FEATURE & BENEFIT

- **Best accuracy in any root canal condition**
(Dry, bleeding, wet, saline, EDTA, NaOCl, Chlorhexidine etc...)
- **Simultaneous visual and sound measurement**

APPLICATION

- **Measuring the working length of the tooth during the endodontic treatment**

SPECIFICATION

- **Rated Input**
DC 4.5V (Alkaline battery size AAA DC1.5V × 3EA)

COMPONENTS

- ROOTOR main unit × 1EA
- Probe cord × 1EA
- File holder A × 1EA
- File holder B × 2EA
- Lip Clips × 5EA



EQ-M

Cordless Endodontic Motor



FEATURE & BENEFIT

- Patented unique movement ART motion (Alternative Rotation Technique): increasing file fracture resistance by 25%
- Swiss-made motor: guarantee high performance and up to six times x of the motor's life compared to Chinese motor
- Much less noise and vibration
- Light weight: 130g (including battery and contra angle)
- Providing 2 high-quality extra batteries
- "Light Guide" function when connecting EQ-Pex (Apex locating available)

COMPONENTS

- EQ-M motor hand piece 1EA
- Hand Charger × 1EA
- Contra angle × 1EA
- AC Adapter × 1EA

SPECIFICATION

Item		Description
Motor handpiece	Speed Range	100 – 1,000 RPM
	Torque Range	1.0 – 4.0 Ncm
	Rated Input	3.7Vdc / 800mAh (Lithium-ion-battery)
	Dimensions	202 X 28 X 28mm (including battery, contra angle)
	Weight	130g (including battery, contra angle)
	Operation Mode	Continuous operation
AC/DC Adapter	Input voltage	100 – 240V, 50 – 60Hz
	Output voltage	9.0Vdc
	Output current	2.0A

- Recommended root canal instrument according to ISO 1797-1:
Nickel-titanium files, suitable for 360° rotation, shaft diameter 2.35mm (type 1)



ES-100

Endodontic Micro Motor



FEATURE & BENEFIT

- **Powerful Performance**
 - RPM: 250~800RPM(16:1 Contra-angle based)
 - Torque: 0.6~6.4 N.cm
 - Working time: 10hrs (2200mAh)
- **Torque Auto Reverse**
- **Excellent Hand-piece**
 - Chemically proven surface of Hand-piece
 - Durable contra-angle with small size head

APPLICATION

- Used in root canal shaping procedure in standard endodontic treatment using rotary endodontic files and rotary endodontic drills

- Auto Reverse & Stop



When the preset torque is reached ①, the handpiece drive runs in an anti-clockwise direction ②, freeing the file, then drive stops ③.

- Auto Reverse & Forward



When the preset torque is reached in Auto Forward mode ①, the file automatically turns in the opposite direction ②, freeing the file, then continues rotating in a clockwise direction ③.

SPECIFICATION

- **Rated Input** 7.2V, 1.2A
- **Weight** 443g

COMPONENTS

- ES-100 main unit × 1EA
- Hand piece × 1EA
- Contra angle × 1EA
- AC Adapter × 1EA



EQ-S

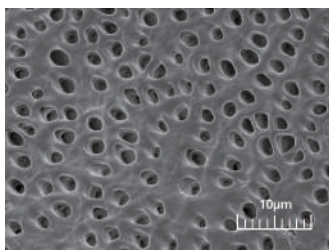
Sonic Powered Endo Irrigator



FEATURE & BENEFIT

- Powerful Performance

Indentation along the tip, combined with counter clockwise motion, ensures 3D active flow. The unique shape and design of the EQ-S tip creates stronger force, which enhances flow in small canal.



After the usage of EQ-S with MD-Cleanser

- Polymer Tip

- Less pressure to the apical foramen
- Easier access to curved canals
- Perfect interaction with irrigant
- Color coded

APPLICATION

Sonic powered endo irrigator using during the endodontic treatment



35/02



25/02



15/02

COLOR

Grey



Pink



SPECIFICATION

- Weight

43g

- Tip Size

Small (15/.02, White)
Medium (25/.02, Red)
Large (35/.02, Green)

- Tip Length mark

18mm, 20mm

- Battery

Alkaline AA battery
(not included)

- Tip Length

23mm

- Operation time

9 hours

COMPONENTS

- EQ-S

Pink, Grey

- EQ-S Tip 15/02 × 30EA

- EQ-S Tip 25/02 × 30EA

- EQ-S Tip 35/02 × 30EA

- Protective Sleeve × 100EA

EQ-V

Endodontic Obturation System



FEATURE & BENEFIT

- Cordless Device
- Refillable, Sterilizable Gutta Percha Cartridge(EQ-V Fill)
- Easy Maintenance
Unique structure of filling system fully inserted GP Bar doesn't mess with your device
- 360° activation ring button (EQ-V Pack)
Providing excellent ergonomic use
- Unique Structure of EQ-V Fill
- Removable Battery
- 360° Rotating Cartridge (EQ-V Fill)
- Outstanding heating performance (EQ-V Fill)
- Removable Battery
- 360° Rotating Cartridge (EQ-V Fill)
- Outstanding heating performance (EQ-V Fill) 200°C in 40 sec
- Chemical Resistance Any disinfectant can be used
- Fill Cartridge Clean



APPLICATION

- EQ-V Pack for down-packing with warmed Gutta Percha in the root canal
- EQ-V Fill for injecting warmed Gutta Percha in the root canal
- It is recommended to fill the apical part of the canal with EQ-V Pack first to avoid any overfilling or under filling. EQ-V Fill can be used for filling the remained part of the canal.

SPECIFICATION



EQ-V Fill

- **Weight** 177g (Including Battery)
- **Operating Voltage** 3.7V
- **Setting Temperature** 160 or 200°C
- **Auto Shutoff** 5minutes



EQ-V Pack

- **Weight** 90g (Including Battery)
- **Operating Voltage** 3.7V
- **Setting Temperature** 180 or 230°C
- **Auto Shutoff** 5minutes

ORDER INFORMATION

Type	Pack Tip×1EA		Pack Tip×2EA		Single Charger	Dual Charger	Battery
	(40/.03)	(60/.05)	(40/.03,50/.04)	(50/.04,60/.05)			
EQ-V Full Kit (refill)				○		○	○
EQ-V Fill Kit (refill)					○		○
EQ-V Pack Kit				○	○		○

Type	Refill Cartridge (6pcs / 1pack)	Bending Tool	Cleaning Tool	Adapter	Power Cord	GP bar (100pcs / bottle)
EQ-V Full Kit (refill)	○			○	○	○
EQ-V Fill Kit (refill)	○	○	○	○	○	○
EQ-V Pack Kit				○	○	

COMPONENTS

- EQ-V Full Kit

- Dual Charger
- Pack Tip × 1EA
· (40/.03)
- Pack Tip × 2EA
· (40/.03, 50/.04)
- Refill Cartridge (23G)
· (6pcs/pack)
- Power Cord

- EQ-V Fill Kit

- Single Charger
- Power Cord
· (50/.04, 60/.05)
- Pack Tip × 2EA
· (50/.04, 60/.05)
- Cleaning and Bending Tool
- GP Bar
· 100pcs/bottle

- EQ-V Pack Kit

- Battery
- Pack Tip × 1EA
· (60/.05)
- Refill Cartridge (25G)
· (6pcs/pack)
- Adapter

EQ-Condenser

STS & NiTi tip Hand Plugger



FEATURE & BENEFIT

- **Flexible NiTi Tip & Stainless Steel Tip** Both type of tips are available with one EQ-Condenser
- **Practical length marking** marked every 5mm
- **Light weight**
- **Chemical resistant surface**
- **Smooth edge and flat end tip** preventing sticking of instrument in curved canal
- **Color coded** The unique structure of filling system don't mess up your device.
- **Anti-crack and rotation prevention**

APPLICATION

- **Condensing obturated material in the root canal during root canal treatment**

SPECIFICATIONS

- NiTi tip

Marking	Size	Taper
N40 ●	0.40mm	0.02
N60 ●	0.60mm	0.01
N80 ●	0.80mm	0.01

- STS tip

Marking	Size	Taper
S80 ●	0.80mm	0.04
S100 ●	1.00mm	0.02
S120 ●	1.20mm	0.01



Glare

Polywave Curing Light



ADVANTAGES

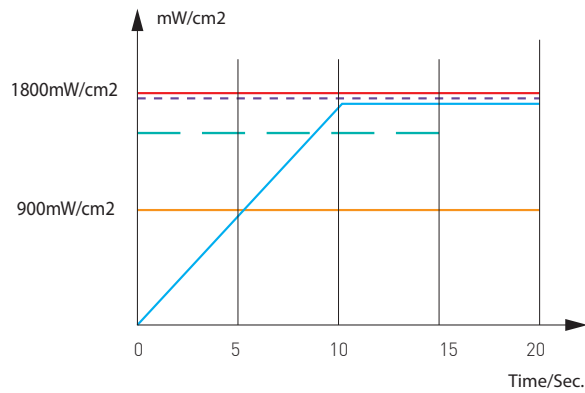
- High Intensity: 1800mW/cm²
- Focused light: deep, uniform curing
- Dual wavelength LED: 405&460nm
- 5 types of curing: High, Low, Soft start, Pulse, Ortho mode
- Slim head& 330° head twist
- Angled hand piece
- OLED screen
- Big capacity battery: 2600mAh
- Interchangeable battery pack

SPECIFICATIONS

- Wave length
400~490(nm)
- Screen
OLED
- Power source
Lithium-ion-battery 2600mAh
- Light source
High powe dual wavelength LED
- Weight
Approx. 130g

5 TYPES OF LIGHT CURING

User can select curing type such as High, Low, Soft start, Pulse mode. Curing time also can be adjusted.



- **High mode**
Quick polymerization with high intensity.
- **Low mode**
Slow polymerization with low intensity.
- **Soft start mode**
Special mode to avoid polymerization shrinkage.
- **Pulse mode**
Special mode to avoid polymerization shrinkage.
- **Ortho mode**
Special mode for bracket attachment.
5cycles of 2sec curing followed by 1sec rest.







RESTORATIVE

Bonding / Etchant

- 50 Meta P&Bond
- 51 Meta Etchant

Liner

- 52 Biner LC

Hybrid Composite

- 54 Nexcomp
- 56 EZFil
- 58 Nexcomp Flow

Temporary Cavity Filling

- 60 MD-Temp Plus

Temporary Cement

- 62 NETC

Permanent Cement

- 64 Metacem

Impression Material

- 66 Imflex
- 68 Imflex Bite

*Saving
the Natural
Tooth*

Meta P&Bond

5th Generation Bonding System



SHELF LIFE

3years

FEATURE & BENEFIT

- 5th Generation Bonding System (Etch and Rinse technics)
One step priming & bonding
- Superior bonding strength
- Wet bonding type

APPLICATION

- Bonding for direct composite, porcelain, composite, metal repair, set amalgam and indirect bonding procedures with Metacem adhesive resin cement

PHYSICAL PROPERTIES

- Dentin shear bonding strength
10.75MPa
- Enamel shear bonding strength
30.76MPa

COMPONENTS

- Meta P&Bond 5g
- Micro brush × 10EA



Meta Etchant

37% Phosphoric Acid



SHELF LIFE

3years

FEATURE & BENEFIT

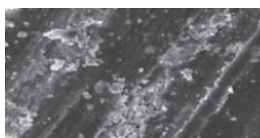
- Easy dispensing and application
- Rinse out completely without residue
- Thixotropic characteristics(not runny)

APPLICATION

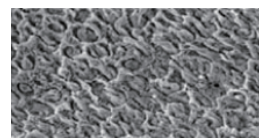
- Conditioning of surface for dentine and enamel with composite and inlay / onlay

CLINICAL CASE

Enamel Sem



Before Meta Etchant application
(x2000)



After Meta Etchant application
(x2000)

COMPONENTS

- Meta Etchant 3g x 3Syringes

- Disposable Tip x 20EA



Biner LC

Light Curing Type Cavity Liner



SHELF LIFE

3years

FEATURE & BENEFIT

- Excellent biocompatibility with dentin and pulp
- Insoluble in water and oral fluids
- Chemically bonds to adhesives and composites
- Flow-on-demand handling and easy dispensing

APPLICATION

- Protect pulp of the tooth
- Lining under all filling material
- Protection when applying the total etch technique

PHYSICAL PROPERTIES

- Flexural strength More than 100MPa
- Radiopacity
- Sensitivity to ambient light Homogeneous for 60s
- Linear Expansion 2 ~ 3%
- Depth of Cure (40 sec.) 2mm

COMPONENTS

- Biner LC 2g × 2Syringes

- Disposable Tips × 10EA





Nexcomp

Nano Hybrid Dental Composite Resin



SHELF LIFE

3years

FEATURE & BENEFIT

- Low 1.6% shrinkage for superior marginal integrity
- Filled with Various nano size filler for excellent polishability
- Non-Slumping
- Various shade 19 shades available
- Optimun handling Excellent Sculptability for restoring natural shape and function
- Non-Sticky

APPLICATION

- Class I,II,III,IV,V restorations
- Diastema closures
- Direct veneers
- Core-buildup to replace missing tooth structure
- Composite and porcelain repairs

SPECIFICATION

- Principle organic component of polymer base
Bis-GMA, Bis-EMA, Urethane dimethacrylate, Triethylene glycol dimehacrylate
- Recommended external energy source
Specification required of Light curing device: usual dental halogen/LED lamps with light intensity of more than 400mV/cm² and wavelength range of 430 ~ 480nm
- Percentage by volume of total inorganic fillers
wt 75%
- Range of dimensions of inorganic filler particles
0.01 to 0.7 μm

COMPONENTS

Nexcomp Kit



4g × 7 Syringes

A1, A2, A3, A3.5, B2, A2E, B2E



- Meta Etchant 3g
- Meta P&Bond Micro brush × 10EA
- Meta Etchant Disposable Tip × 20EA



- Meta P&Bond 5g

Nexcomp Refill

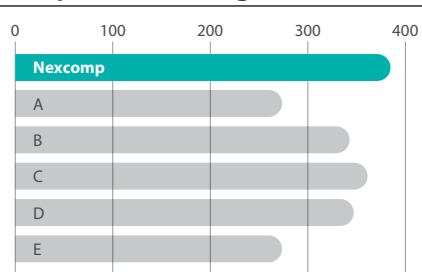


4g × 1 Syringe

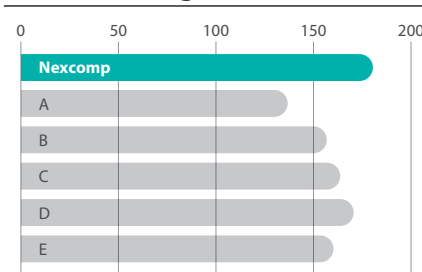
A2E, B2E, A1, A2, A3, A3.5, A4, B1, B2, B3, C2, C3, D2, D3, TL, WT, OP, OA2, OA3

PHYSICAL AND CHEMICAL PROPERTIES

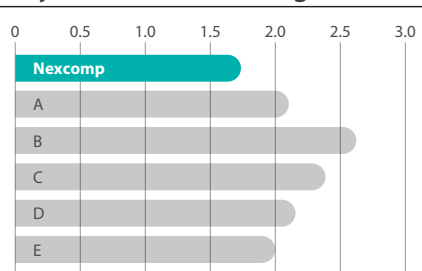
Compressive Strength (MPa)



Flexural Strength (MPa)



Polymerization Shrinkage Rate (%)



Ezfil

Dental Composite Resin



SHELF LIFE

3years

FEATURE & BENEFIT

- **High strength**
Prevents fracture of restoration
- **Radiopacity**
Accurate diagnosis available
- **Manipulation enhanced**
Quick and easy treatment available
- **Low shrinkage**
Post-op sensitivity reduced
- **Various shade**
Natural appearance to maximize aesthetic results

APPLICATION

- Class I, II, III, IV, V restorations
- Core-Buildup to replace missing tooth
- Structure
- Diastema closures
- Direct veneers
- Composite and porcelain repairs

COMPONENTS

Ezfil Kit



EZFil 4g Syringe × 7EA
- A1, A2, A3, A3.5, B1, B2, OP



Meta Etchant 3g × 1ea



Meta P&Bond 1EA (5g)

Ezfil Refill



4g Syringe 1EA
A1, A2, A3, A3.5, A4, B1, B2, B3, B4, C1, C2,
C3, C4, D2, D3, D4, OP, TL



Meta P&Bond Microbrush × 10EA



**Meta Etchant Disposable
Tips × 20EA**



Nexcomp Flow

Nano Hybrid Dental Composite Resin



SHELF LIFE

3years

FEATURE & BENEFIT

- Filled with Various nano size filler for excellent polishability
- Excellent Radiopacity
- Available in 14 shades including opaque and translucent
- No slumping and running

APPLICATION

- Restoration of invasive cavity
- Repair acrylic temporary materials
- Pits and fissure sealing
- Repair of esthetic indirect restorations
- Base and Liner for direct restoration

SPECIFICATION

- Principle organic component of polymer base
Bis-GMA, Bis-EMA, Urethane dimethacrylate, Triethylene glycol dimethacrylate
- Range of dimensions of inorganic filler particles
0.01 to 0.7 μm
- Range of dimensions of inorganic filler particles
Specification required of Light curing device: usual dental halogen/LED lamps with light intensity of more than 400mW/cm² and wavelength range of 430 ~ 480nm
- Percentage by volume of total inorganic fillers
wt 75%

COMPONENTS

Nexcomp Flow Set



- 2g x 5 Syringes
A2, A3, A3.5, B2, B3



- 20ea disposable tips

Nexcomp Flow Refill



- 2g x 2 Syringes
A1, A2, A3, A3.5, A4, B1, B2, B3, OA2, OA3,
C2, D2, WT, TL



- 10EA disposable tips



MD-Temp Plus

Hydraulic Temporary Restorative



SHELF LIFE

3years

FEATURE & BENEFIT

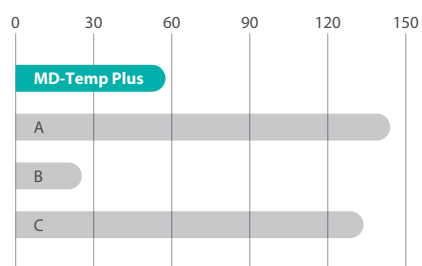
- Easy application and removal
- Hermetically seals the cavity
- Excellent stability when sets
- Proper crush strength

APPLICATION

- Temporary cavity filling

PHYSICAL AND CHEMICAL PROPERTIES

Setting Time (min)



COMPONENTS



MD-Temp Plus 40g
White, Pink

DIMENSION / WEIGHT

· 40 × 35 × 39mm / 52.5g



NETC / NETC EASY

Non-Eugenol Temporary Cement

SHELF LIFE

2years



FEATURE & BENEFIT

- **2 types available**
paste-paste tube type, dual syringe type
- **Working time**
1.5min
- **Setting time**
6min
- **Non-Eugenol**
Suitable for patients with sensitivity to eugenol

APPLICATION

- Temporary cementation of crown & bridges

COMPONENTS

NETC

- Tube Type



- Base 40g



- Catalyst 14g

- Mixing Pad

NETC Easy

- Dual Syringe Type



- 11g × 2ea

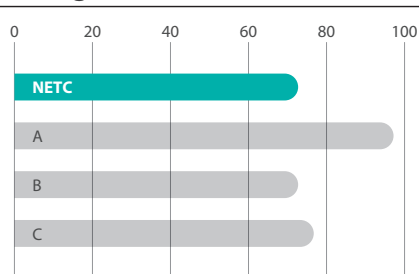


- Mixing tip × 2ea

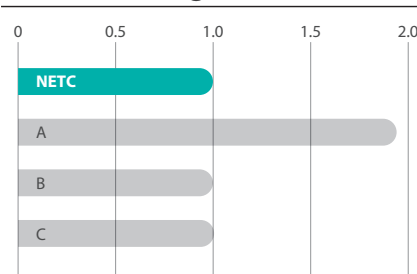
- Cap × 2ea

PHYSICAL AND CHEMICAL PROPERTIES

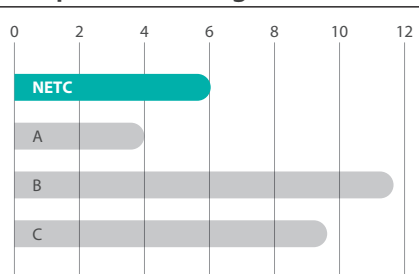
Setting time (min)



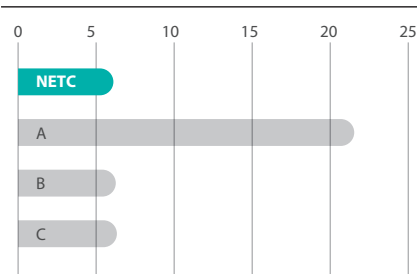
Adhesive strength (MPa)



Compressive strength (MPa)



Film thickness (μm)



· NETC complies with the requirements of ISO 3107 (Type I, Class 2B)

Metacem

Permanent Dual Cure Resin Cement



SHELF LIFE

2years

FEATURE & BENEFIT

- Easy to use for cosmetic indirect restorations
- Provides high resistance to compressive force
- 5 shades correspond with shade guide
A1, A3, B2, TL(Translucent white), OP(Opaque)

APPLICATION

- Crown & Bridges (Ceramic, Composite, Porcelain, Metal)
- Inlay / Onlay cementation
- Bonding for porcelain veneers
- Endodontic posts cementation
- Core build up

COMPONENTS

Metacem Kit



- 9g × 2 Dual syringes
- A3, TL(Translucent white)



- Meta P&Bond Micro brush × 10EA



- Meta P&Bond 5g



- Meta Etchant Disposable Tip × 20EA

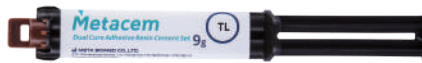


- Meta Etchant 3g



- Metacem Mixing Tip × 20EA
- Spatula
- Mixing pad

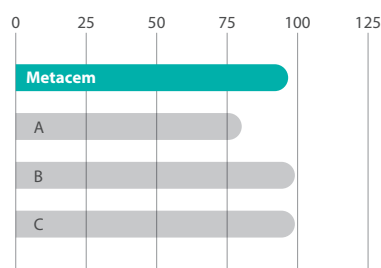
Metacem Refill



- 9g × 1 Dual Syringe
- A1, A3, B2, TL(Translucent white), OP(Opaque)

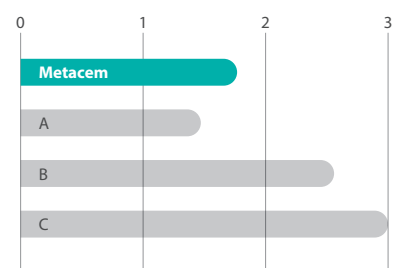
PHYSICAL AND CHEMICAL PROPERTIES

Flexural Strength (MPa)



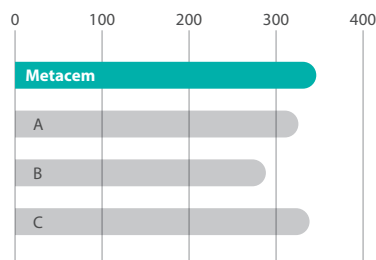
- Working time 2 min
- Setting time 5 min
- Flexural strength 99 MPa
- Radiopacity 2.33mm Al/mm

Radiopacity (Aluminum step wedge thickness(mm))



- Film thickness < 21µm
- Water absorption 29.3µm/mm²
- Water solubility 2.3µm/mm²

Compressive Strength (MPa)



Imflex

Hydrophilic Vinyl Polysiloxane Impression Material



FEATURE & BENEFIT

- Dental impression of inlay, onlay, crown and bridge preparation
- Treatment Functional impressions

APPLICATION

- Easy squeezing with a low extrusion force
- Good mechanical property & High tear strength
- Thixotropic : No flow to proximal and stable
- Controlled air-bubbles during production
- 3D scannable impression material : powder-free

COMPONENTS

Imflex Heavy



- 50ml Cartridge 2EA
- Auto mixing tips 6EA

Imflex Monophase



- 50ml Cartridge 2EA
- Auto mixing tips 6EA

Imflex Light



- 50ml Cartridge 2EA
- Auto mixing tips 6EA
- Intra Oral tip 2EA

Imflex Putty (Catalyst)



Imflex Putty (Base)



Measuring spoon



Imflex Bite

Bite Registration



FEATURE & BENEFIT

- Easy squeezing with a low extrusion force
- Good mechanical property & High tear strength
- Thixotropic
No flow to proximal and stable
- Controlled air-bubbles during production
- 3D scannable impression material : powder-free

APPLICATION

- Bite registration
for getting the exact final prosthetic appliance and bite points

COMPONENTS

Imflex Bite



- 50ml Cartridge 2EA

- Auto mixing tip 6EA



- Rubber-Duck tip 6EA



BONE GRAFT

Synthetic Bone

- 70 BoneMedik-DM Bone
- 72 Sorbone

*Saving
the Natural
Tooth*

BoneMedik-DM

Synthetic Bone Graft (60% HA, 40% β -TCP)



SHELF LIFE

5years

FEATURE & BENEFIT

- Silicon ion containing porous Hydroxyapatite [Si-Content: Avg. 0.6wt%].
Silicon ion technology speeds up the bone generation & heal activation
- Outstanding biocompatibility
- This structure is similar to the multidirectional, interconnected porosity of cancellous bone.
- BoneMedik-DM is derived from the exoskeleton of marine coral which has a natural trabecular structure.
BoneMedik-DM consists of large pores which run parallel to the major growth axis and smaller interconnecting pores which run perpendicular to the major growth axis.
- Optimum balance between HA and β -TCP in the ratio[%], 60:40

APPLICATION

- BoneMedik-DM is a bone grafting material to fill, augment or reconstruct periodontal or oral/maxillofacial defects or osseous defects created from traumatic injury to the bone. BoneMedik-DM can be used with autogenous bone grafting materials.
- **Typical uses include**
 - augmentation of the alveolar ridge
 - Filling of periodontal or other alveolar bone defects
 - Filling of extraction sockets
 - Filling of peri-implant defects in conjunction with products intended for Guided Bone Regeneration(GBR)
 - For use in elevating the maxillary sinus floor

SIZE & WEIGHT

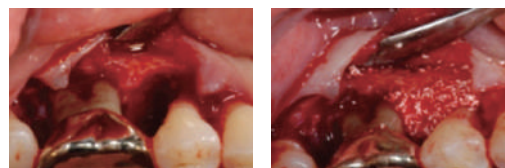
Package Specifications (1vial / box)

Contents	Weight			
	0.25g	0.5g	1.0g	2.0g
0.3 ~ 0.5mm	0.25g	0.5g	1.0g	2.0g
0.5 ~ 1.0mm	0.25g	0.5g	1.0g	2.0g
1.0 ~ 2.0mm	0.25g	0.5g	1.0g	2.0g

CLINICAL CASE

- Figure 1. Clinical view during surgery

Intrabony defect(left), BoneMedik-DM placed into intrabony defect



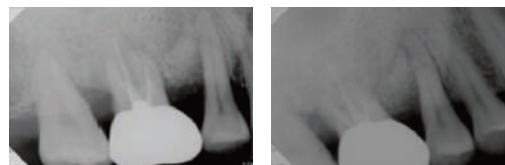
- Figure 2. Clinical view.

Pre-operative(left) and Six months post operative(Right) Clinical



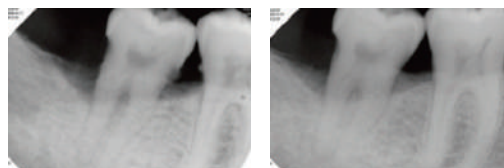
- Figure 3. Radiographic view of test group.

Pre-operative(Left) and Six months post operative radiographic(Right)



- Figure 4. Radiographic view of control group.

Pre-operative(Left) and six months post operative radiographic(Right)



COMPONENTS

Sorbone

Synthetic Bone Graft (100% β -TCP)



SHELF LIFE

5years

FEATURE & BENEFIT

- Excellent osteoconductivity
- Speed up the bone generation & heal activation
- Outstanding biocompatibility
- Easy handling
- Porosity: 55~60%

APPLICATION

- Sorbone is a bone grafting material to fill, augment or reconstruct periodontal or oral/maxillofacial defects or osseous defects created from traumatic injury to the bone. Sorbone can be used with autogenous bone grafting materials.
- **Typical uses include**
 - Augmentation of the alveolar ridge
 - Filling of periodontal or other alveolar bone defects
 - Filling of extraction sockets
 - Filling of peri-implant defects in conjunction with products intended for Guided Bone Regeneration(GBR)
 - For use in elevating the maxillary sinus floor

ORDER INFORMATION

Vial Type



Particle Size	Weight			
	0.25g	0.5g	1.0g	2.0g
0.3 ~ 0.5mm	0.25g	0.5g	1.0g	2.0g
0.5 ~ 1.0mm	0.25g	0.5g	1.0g	2.0g
1.0 ~ 2.0mm	0.25g	0.5g	1.0g	2.0g
2.0 ~ 4.0mm	0.25g	0.5g	1.0g	2.0g

Syringe Type



Particle Size	Volume			
	-	-	1.0cc	2.0cc
0.3 ~ 0.5mm	-	-	1.0cc	2.0cc
0.5 ~ 1.0mm	0.25cc	0.5cc	1.0cc	2.0cc
1.0 ~ 2.0mm	0.25cc	0.5gcc	1.0cc	-



DOMESTIC GROUP

META provides total solution in bio-medical field

HEAD OFFICE

270, Osongsaengmyeong 1-ro, Osong-eup, Heungdeok-gu, Cheongju-si,
Chungcheongbuk-do, Republic of Korea

TEL +82-43-218-1981 **FAX** +82-43-217-1984

CHEONGJU BRANCH OFFICE

136, Mochung-ro, Seowon-gu, Cheongju-si, Chungcheongbuk-do,
Republic of Korea

TEL +82-43-217-8132 **FAX** +82-43-217-8133

META BEAUTY R&D CENTER

215, Osongsaengmyeong 1-ro, Osong-eup, Heungdeok-gu, Cheongju-si,
Chungcheongbuk-do, Republic of Korea

TEL +82-43-230-8905 **FAX** +82-43-217-1983

META NETWORKS CO., LTD.

55, Galmachi-ro 281beon-gil, Jungwon-gu, Seongnam-si, Gyeonggi-do,
Republic of Korea

TEL +82-31-730-4124 **FAX** +82-31-744-7385

META STSYSTEMS CO., LTD.

55, Galmachi-ro 281beon-gil, Jungwon-gu, Seongnam-si, Gyeonggi-do,
Republic of Korea

TEL +82-31-731-7377 **FAX** +82-31-731-1888

META VISION - SEOUL

601, B-Dong, 27, Chilpae-ro, Jung-gu, Seoul, Republic of Korea

TEL +82-2-756-2056 **MAIL** master@metavision.co.kr

GLOBAL COMPANY

Global Enterprise that is proud of world best
as a cosmopolitan META BIOMED CO., LTD.

METABIOMED
CHINA

Room. 10A75, No2299, WestYan`an Road,
Changning Destrict Shanghai China/ 200336

TEL +86-21-6280-6286 **FAX** +86-21-6280-6282 **MAIL** chninfo@vip.sina.com

METABIOMED
**VINA
CO., LTD.**

Lot N-1B, Road No 4 Long Hau Commune Zone Expansion, Hamlet 3, Long Hau,
Commune, Can Giuoc Distric, Long An Province, Ho Chi Minh, Vietnam

TEL +84-08-3620-6672

METABIOMED INC.
**NORTH &
SOUTH AMERICA**

3015 Advance Lane Colmar, PA. 18915 (U.S.A)

TEL +1-267-282-5893 **FAX** +1-267-282-5899

MAIL america@metabiomed-inc.com

WEB www.metabiomedamericas.com

METABIOMED
GERMANY

Meta Biomed Europe GmbH Wiesenstra. 35, 45473 Mülheim an der Ruhr

TEL +49 (0) 208-309919-10 **FAX** +49 (0) 208-309919-99

MAIL europe@metabiomed-inc.com

WEB www.meta-europe.com